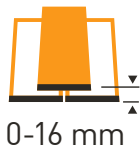


# SLATE FLASHING WITH ONE-PIECE SIDE ELEMENT

**KLS**



## APPLICABLE

- In roof pitch range of 15-90°
- Suitable for slates and flat roofing, up to 8mm (max overlapped thickness is 16 mm).

## FEATURES

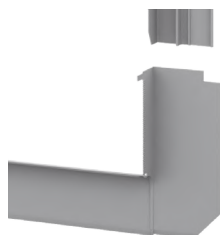
- Perfect watertightness
- Easy installation
- Weather and UV ray resistant
- Lead free components
- One-piece side element
- Without apron to ensure a perfect seal to flat roofing materials

## MATERIAL

- Aluminium
- Powder coated grey, RAL7043

## AVAILABLE SIZES [CM]

<b>C2A</b>	<b>C4A</b>	<b>C6A</b>	<b>F4A</b>	<b>F6A</b>	<b>M4A</b>	<b>M6A</b>	<b>M8A</b>	<b>M10A</b>	<b>P6A</b>	<b>P8A</b>	<b>S6A</b>	<b>S8A</b>	<b>U4A</b>	<b>U8A</b>
55x78	55x98	55x118	66x98	66x118	78x98	78x118	78x140	78x160	94x118	94x140	114x118	114x140	134x98	134x140



[www.dakea.com](http://www.dakea.com)

